



Cette présentation a été effectuée le 9 mars 2010, au cours de la journées « Le développement des capacités : dialogue entre l'expérience internationale et celle du Québec » dans le cadre des Journées annuelles de santé publique (JASP) 2010. L'ensemble des présentations est disponible sur le site Web des JASP, à l'adresse <http://www.inspq.qc.ca/archives/>.



Faire écho à l'expérience de la Guinée

un projet environnemental
Nituuchischaayihitaa Aschii dans les
Terres Cries de la Baie James

Yv
Mars 2010



Objectifs

- Énumérer quelques stratégies pour développer des compétences culturelles dans le domaine de la santé et des services sociaux

Mars 2010

Yv JASP

2

Introduction



Contexte de l'intervention Territoire



Mars 2010

Yv JASP

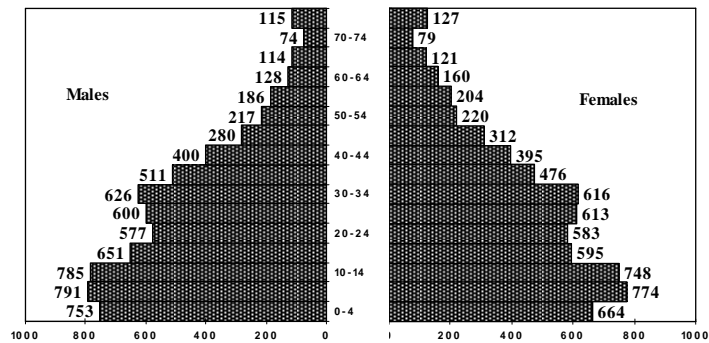
6



7

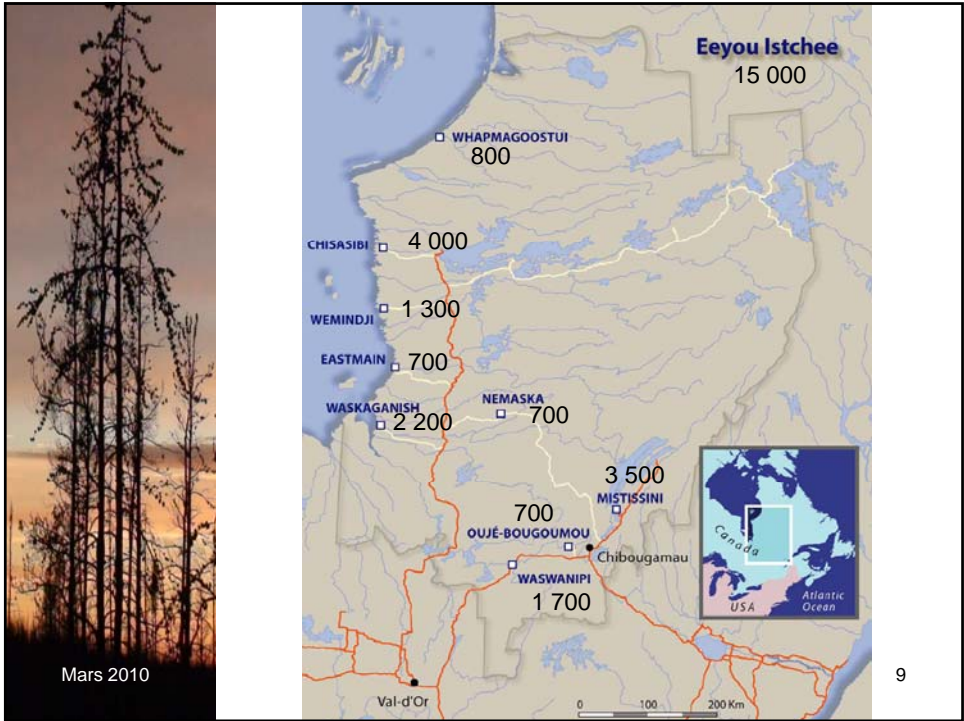


Contexte de l'intervention Population



Yv JASP

8



·ᐱᐢᐢᐢᐢᐢ

waachiyaah

p, interjection / p, interjection

(hello, greeting, shake hands)

(bonjour, salut)

hi, hello (expression when greeting someone, shaking hands, from English 'what cheer')

bonjour, salut (expression utilisée pour saluer quelqu'un, de l'anglais 'what cheer')

Ex:

·ᐱᐢᐢᐢᐢᐢ, ᐃᐢᐢᐢᐢᐢᐢᐢᐢᐢᐢᐢ ᐢᐢᐢ ᐱᐢᐢᐢᐢᐢᐢᐢᐢᐢᐢᐢ

waachiyaah, nimiywaayihtaan miin aah waapimitaan.

Greetings, I am happy to see you again.

Bonjour, je suis content de te revoir.



Syllabics Chart - Eastern James Bay									Finals	
v		Δ	Δ	▷	▷	◁	◁		o	·
e		i	ii	u	uu	a	aa		u	h
·v		·Δ				·◁	·◁			
we		wii				wa	waa			
v	·v	Λ	Λ	>	>	<	<	·<	<	
pe		pi	pii	pu	puu	pa	paa	pwaa	p	
u	·u	n	n̄	ᐅ	ᐅ	c	c̄	·c̄	c	
te	twe	ti	tii	tu	tuu	ta	taa	twaa	t	
q	·q	p	p̄	ᑲ	ᑲ	b	b̄	·b̄	b	ᑲ
ke	kwe	ki	kii	ku	kuu	ka	kaa	kwaa	k	kw
ᑲ	·ᑲ	ᑲ	ᑲ̄	ᑲ	ᑲ	ᑲ	ᑲ̄	·ᑲ̄	ᑲ	
che	chwe	chi	chii	chu	chuu	cha	chaa	chwaa	ch	
ᐅ		c	c̄	ᐅ	ᐅ	c	c̄	·c̄	c	
le		li	lii	lu	luu	la	laa	lwaa	l	
ᑲ	·ᑲ	ᑲ	ᑲ̄	ᑲ	ᑲ	ᑲ	ᑲ̄	·ᑲ̄	ᑲ	ᑲ
me	mwe	mi	mii	mu	muu	ma	maa	mwaa	m	mu
ᑲ	·ᑲ	ᑲ	ᑲ̄	ᑲ	ᑲ	ᑲ	ᑲ̄	·ᑲ̄	ᑲ	
ne	nwe	ni	nii	nu	nuu	na	naa	nwaa	n	
v		n	n̄	p	p̄	q	q̄	·q̄	q	
re		ri	rii	ru	ruu	ra	raa	rwaa	r	
ᑲ	·ᑲ	ᑲ	ᑲ̄	ᑲ	ᑲ	ᑲ	ᑲ̄	·ᑲ̄	ᑲ	
se	swe	si	sii	su	suu	sa	saa	swaa	s	
ᑲ	·ᑲ	ᑲ	ᑲ̄	ᑲ	ᑲ	ᑲ	ᑲ̄	·ᑲ̄	ᑲ	
she	shwe	shi	shii	shu	shuu	sha	shaa	shwaa	sh	
ᑲ	·ᑲ	ᑲ	ᑲ̄	ᑲ	ᑲ	ᑲ	ᑲ̄	·ᑲ̄	ᑲ	
ye	ywe	yi	yii	yu	yuu	ya	yaa	ywaa	y	

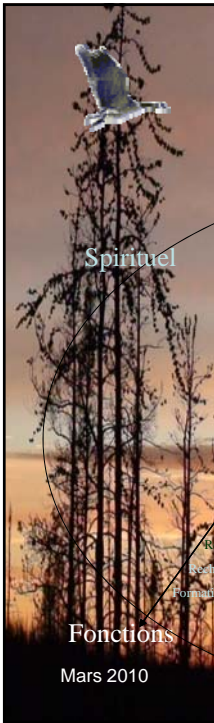


Contexte de l'intervention Miyupimaatisiun

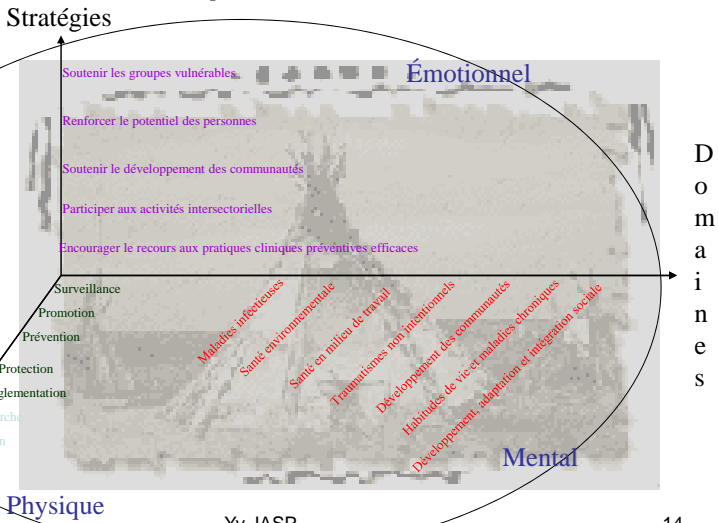
Être assez bien pour pouvoir
participer aux activités de chasse
et de pêche et subvenir aux
besoins de la famille

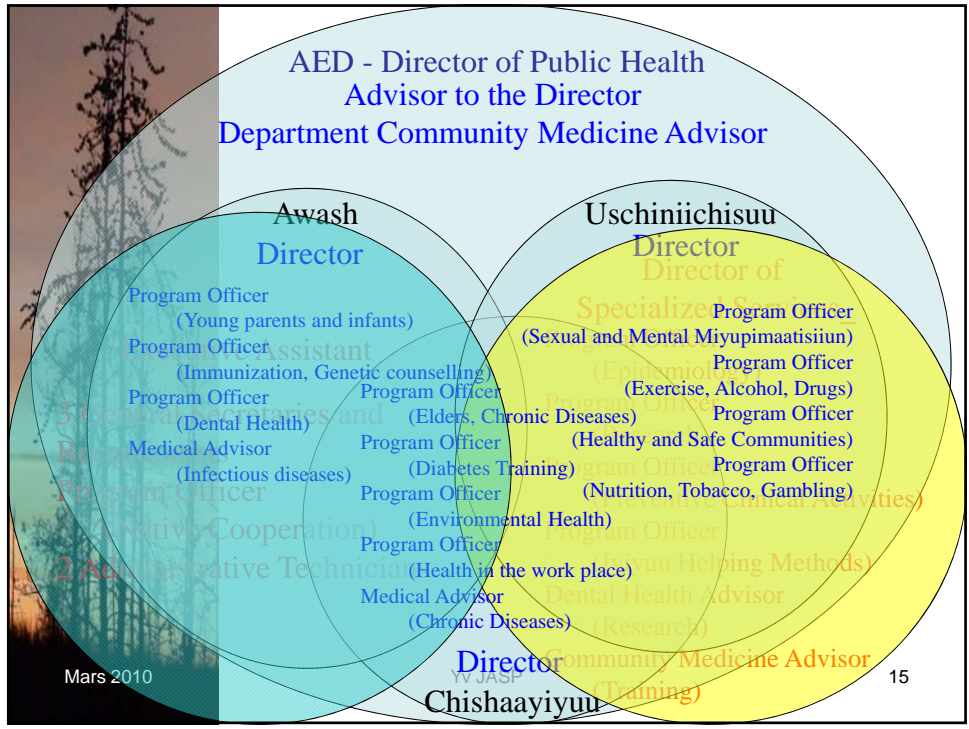
Yv JASP

13



Intervention Adaptation du PNSP







Intervention Camps scientifiques



Intervention L'oral sur la toile

<http://www.creehealth.org/>

Home Community Stories Press Room About Us Healthcare Workers

Search Website SEARCH

Browse by Health Topics

diabetes flu h1n1 healthy eating heart disease influenza mental health research sexual health sexually transmitted infections stroke vaccination

March is Nutrition Month

Looking for an easy way to set up healthy meals? Get the Place Method placement here. Drop the Pop activities will be happening in your community. Challenge yourself and your friends to Drop the Pop! Find recipes and food fact cards for First Nations communities on the Health Canada

Latest News

- March is Nutrition Month - check out tasty and healthy recipes @ Health Canada site, <http://bit.ly/caiswm> #creehealth 3 days ago
- Listen to Heart Health PSA (Cree language) <http://bit.ly/d6t7r> #creehealth 4 days ago
- New Illness, Traditional Healing. | Public Health Department of the Cree Health Board: <http://bit.ly/4XhV0N> via @addfbis 44 days ago

Follow us on twitter

Community Stories

Daycare Dining
Mar 1st 2010 - 12:01 am

Over 5,000 meals and 10,000 snacks are served each week by the sixteen daycares of Eeyou Itchee's nine communities. That's enough to feed 1200 children, who need meals that are safe, nutritious...
[Read more](#)

Communicating with Diabetes Patients
Feb 23rd 2010 - 8:31 pm

Our patients attend to emotional issues, and live in for the long term: success at attention patients with diabetes demands

Intervention

Healthy Hearts
Feb 24th 2010 - 8:36 pm

"There are two kinds of risk factors for heart disease: those you cannot change, and those you can," says Dr. David Dannenbaum, a Cree Public Health physician specializing in diabetes and other...
[Read more](#)

Health and the environment
Jan 14th 2010 - 3:49 am

A good diet, a healthy lifestyle, and a harmonious relationship with the environment: traditionally, the people of Eeyou Itstchee have enjoyed all three. But environments have changed, especially...
[Read more](#)

New Illness. Traditional Healing.
Jan 14th 2010 - 3:26 am

In the last decade, Cree communities in northern Quebec have experienced a 150% increase in the numbers of people over twenty affected by type II diabetes, so that almost 20% of the population...
[Read more](#)

Mars 2010 Yv JASP 20



Mars 2010

Leçons de l'intervention

- Appropriation
- Motivation
- Adaptation
- Création
- Perpétuation

Yv JASP

21



Mars 2010

Leçons de l'intervention

Caractère universel de ces leçons

- Mondialisation
 - Transferts rapides de population
 - Mutations culturelles rapides dans les sociétés

Yv JASP

22



Conclusion

- Développement des compétences culturelles en liiyiyu Aschii
 - processus d'appropriation du PNSP
 - dialogue avec les communautés
 - camps scientifiques
 - l'oral sur la toile

Yv JASP

23

